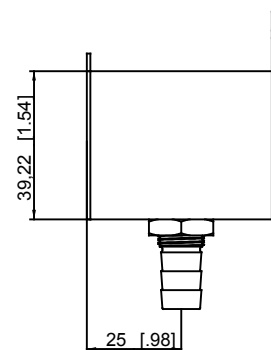
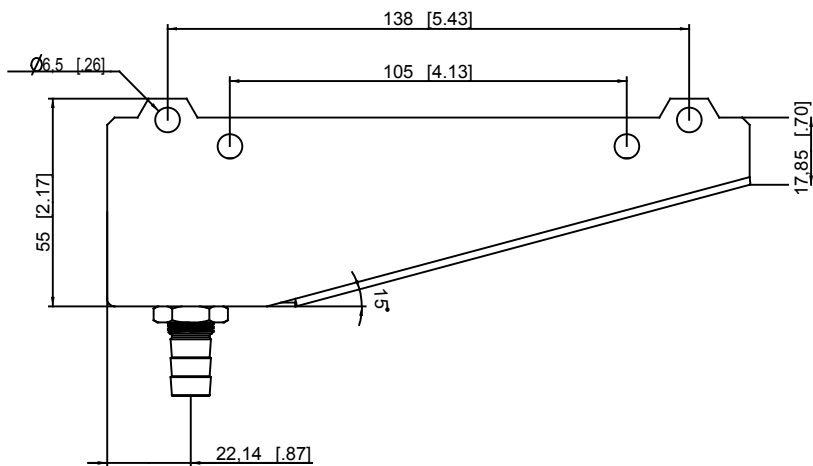
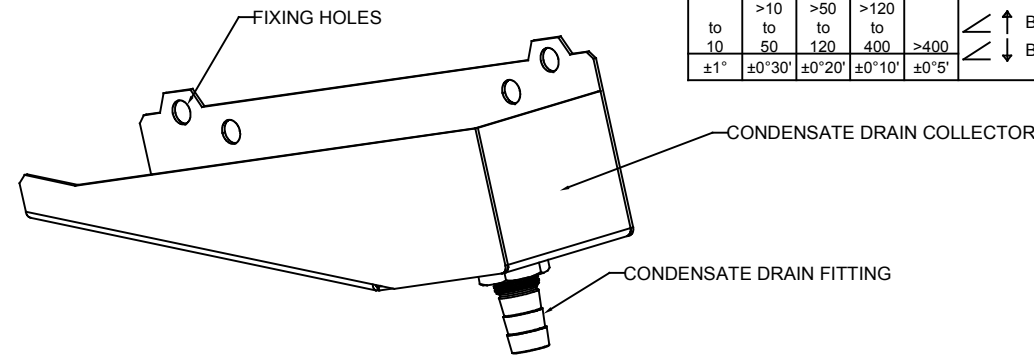
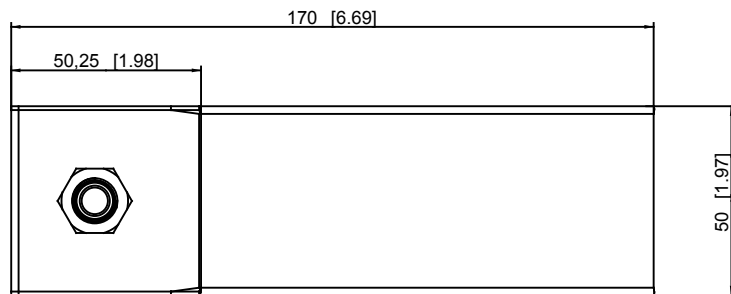


UNLESS OTHERWISE SPECIFIED, DIMENSIONS ARE IN MM. DIMENSIONS W/O TOLERANCES ISO2768-mk AS FOLLOWS. SURFACES ISO1302. TOLERANCES ARE NOT CUMULATIVE.

| LINEAR DIMENSIONS | | | | | | |
|-------------------|------|------|------|------|------|-------|
| 0,5 | >3 | >6 | >30 | >120 | >400 | >1000 |
| to | to | to | to | to | to | to |
| 3 | 6 | 30 | 120 | 400 | 1000 | 2000 |
| to | to | to | to | to | to | to |
| 1000 | 2000 | 4000 | | | | |
| ±0.1 | ±0.1 | ±0.2 | ±0.3 | ±0.5 | ±0.8 | ±1.2 |
| ±2 | | | | | | |

| ANGULAR DIMENSIONS | | | | | BEND DIRECTION | |
|--------------------|---------|---------|---------|--------|----------------|----------|
| to | >10 | >50 | >120 | | ↙ ↑ | BEND OUT |
| 10 | 50 | 120 | 400 | >400 | ↘ ↓ | BEND IN |
| ±1° | ±0°'30' | ±0°'20' | ±0°'10' | ±0°'5' | | |



NOTES:

- THIS IS A CREO PARAMETRIC DRAWING. ANY CHANGES MUST BE WITHIN PDM LINK.
- REMOVE ALL BURRS AND SHARP EDGES.

| REV | BY | DATE | DESCRIPTION |
|-----|----|----------|---------------------------------|
| 0.4 | VP | 03.06.19 | Updated drawings. |
| 0.3 | BG | 15.12.16 | Added flat flaps for holes |
| 0.2 | BG | 14.12.16 | Added \varnothing 6.5mm holes |
| 0.1 | BG | 06.12.16 | Added welding note |

| | |
|-----------|-----------------------|
| Art.no.: | M5930043939 |
| Material: | Stainless Steel 1.0mm |

Condensate Drain
TG3030 / TG3050

| | | | |
|-----------|----------|--------------------|------------------------|
| Designed: | B.Galea | 06.12.2016 | FIRST ANGLE PROJECTION |
| Drawn: | B.Galea | 06.12.2016 | SHEET SCALE |
| Checked: | G.Zammit | Approved: G.Zammit | 1 of 1 0.500 |
| 43939 | | | ISSUE SIZE |
| | | | 0.4 A2 |

| | | | |
|--------------------------------|-----------|-----|------------------|
| 43939 | DRAWING | 0.4 | Work In Progress |
| TG3030_TG3050_CONDENSATE_DRAIN | PART | 0.5 | Work In Progress |
| CREO.FILENAME | FILE TYPE | REV | RELEASE |

SEIFERT
wegweisend innovativ
WE RESERVE ALL COPYRIGHT AND OTHER RIGHTS IN THIS DOCUMENT SEIFERT SYSTEMS LTD.