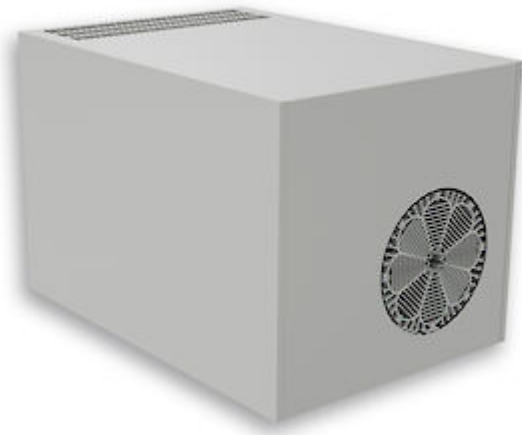


Roof mounted air conditioner



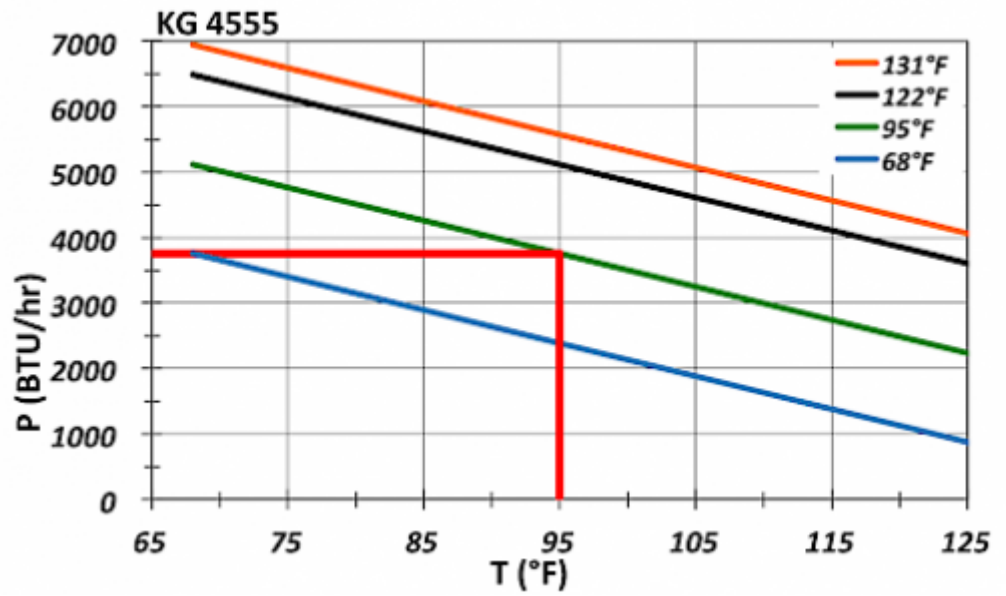
Description

Order Number:	45551001
Brand Name:	SLIMLINE TOP
Color:	RAL 7035
Housing Material:	Mild steel, powder coated
Ingress protection:	NEMA 12
Approvals:	CE, cURus

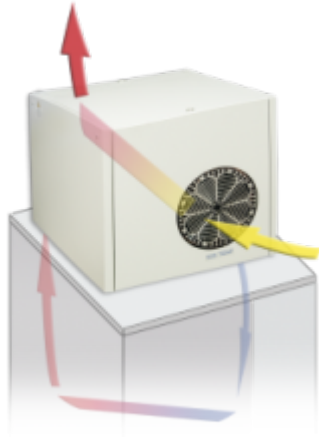
Technical data

Cooling capacity 95F/95F:	3750 BTU
Cooling capacity 95F/122F:	2390 BTU
Compressor type:	Rotary piston compressor
Refrigerant / GWP:	R 134a / 1430
Refrigerant charge:	500 g / 17.6 oz
High / low pressure:	35 / 6 bar 508 / 88 psig
Operating temperature range:	50°F - 122°F
Air volume flow (system / unimpeded):	Ambient air circuit: 212 / 706 cfm Cabinet air circuit: 294 / 383 cfm
Mounting:	Roof mounted
Dimension H x W x D:	15.75 x 15.75 x 23.62 inch
Weight:	121.25 lbs.
Cut out dimensions:	4.25 x 20.86 inch (x2)
Voltage / Frequency:	120 V ~ 60 Hz
UL Voltage / Frequency:	100/120 V ~ 50/60 Hz
Current 95F95F:	8 A
Starting current:	37 A
Max. current:	9.6 A
Nominal power 95F95F:	800 W
Max. power:	1.09 kW
Fuse:	16 A (T)
Short-circuit current rating:	5 kA
Connection:	Connection terminal block

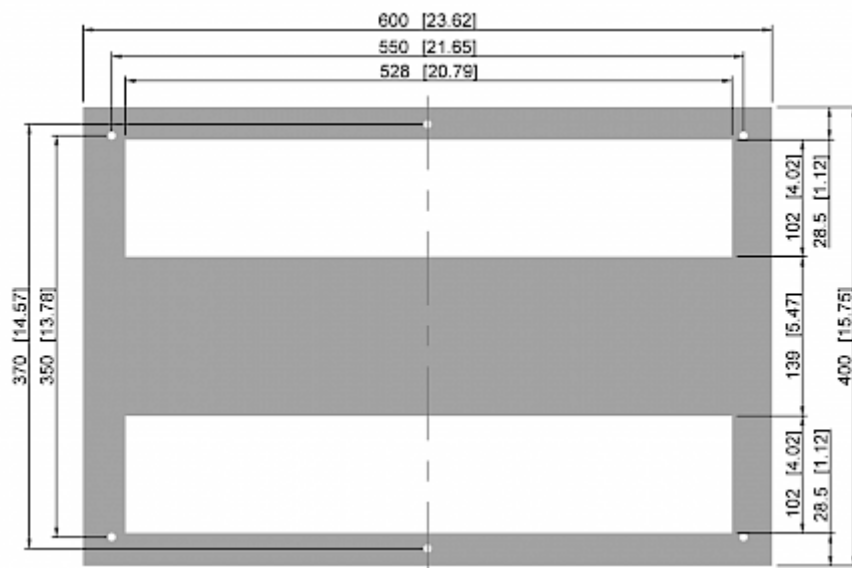
Performance graph:



Air flow:



Cut out dimensions:



Order Information

Stainless steel housing part no.	4555102
Taric code	84158200
GTIN (EAN)	5350604330108