

| | | | | | | | |
|---|-----------|------------|-------------|-------------|----------------|---------------|---------------------|
| UNLESS OTHERWISE SPECIFIED, DIMENSIONS ARE IN MM. DIMENSIONS W/O TOLERANCES ISO2768-mK AS FOLLOWS. SURFACES ISO1302. TOLERANCES ARE NOT CUMULATIVE. | | | | | | | |
| LINEAR DIMENSIONS | | | | | | | |
| 0.5 to 3 | >3 to 6 | >6 to 30 | >30 to 120 | >120 to 400 | >400 to 1000 | >1000 to 2000 | >2000 to 4000 |
| ±0.1 | ±0.1 | ±0.2 | ±0.3 | ±0.5 | ±0.8 | ±1.2 | ±2 |
| ANGULAR DIMENSIONS | | | | | BEND DIRECTION | | |
| to 10 | >10 to 50 | >50 to 120 | >120 to 400 | >400 | ↙ ↗ | ↖ ↘ | BEND OUT BEND IN |
| ±1° | ±0°30' | ±0°20' | ±0°10' | ±0°5' | | | |

NOTES:

- THIS IS A PRO/ENGINEER PARAMETRIC DRAWING. ANY CHANGES MUST BE WITHIN PRO/INTRALINK.
- REMOVE ALL BURRS AND SHARP EDGES.
- DIMENSIONS IN MM[INCH].

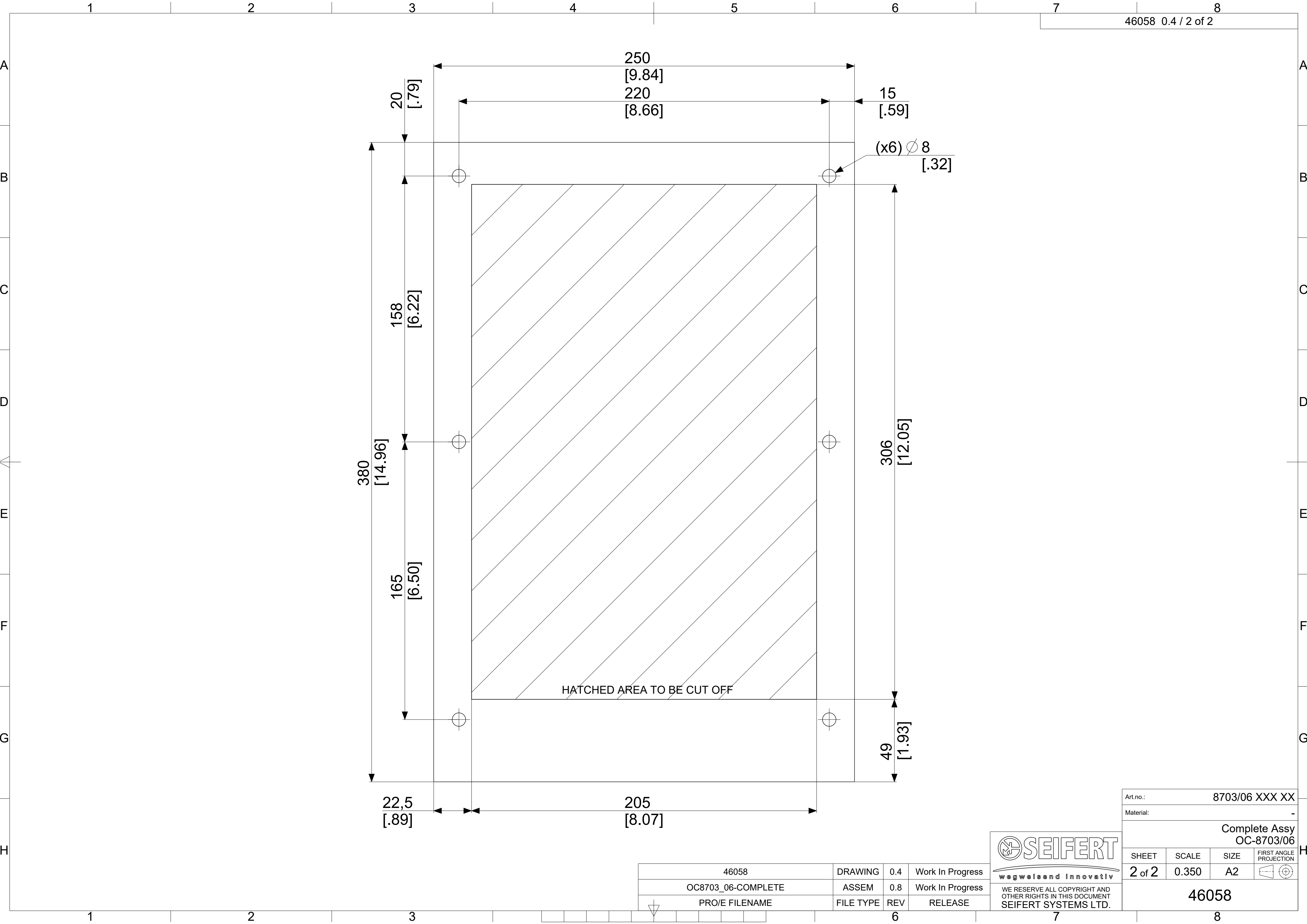
| REV | BY | DATE | DESCRIPTION |
|-----|----|----------|------------------|
| 0.4 | LS | 10.06.21 | Updated drawing |
| 0.3 | DC | 15.05.20 | Updated drawing |
| 0.2 | DC | 17.02.20 | Added sheet 2 |
| 0.1 | VP | 04.11.19 | Updated drawing. |

| | |
|-----------|----------------|
| Art.no.: | 8703/06 XXX XX |
| Material: | - |

| | | | |
|-----------------------------|----------|------------|------------------------|
| Complete Assy OC-8703/06 | | | |
| Designed: | D.Cini | 07.01.2019 | FIRST ANGLE PROJECTION |
| Drawn: | D.Cini | 13.05.2019 | SHEET |
| Checked: | G.Zammit | Approved: | G.Zammit |
| 46058 | | | 1 of 2 |
| | | | SCALE |
| | | | 0.350 |
| | | | ISSUE |
| | | | SIZE |
| | | | 0.4 A2 |

| | | | |
|--------------------|-----------|-----|------------------|
| 46058 | DRAWING | 0.4 | Work In Progress |
| OC8703_06-COMPLETE | ASSEM | 0.8 | Work In Progress |
| PRO/E_FILENAME | FILE TYPE | REV | RELEASE |



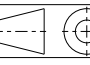


| | | | |
|--------------------|-----------|-----|------------------|
| 46058 | DRAWING | 0.4 | Work In Progress |
| OC8703_06-COMPLETE | ASSEM | 0.8 | Work In Progress |
| PRO/E FILENAME | FILE TYPE | REV | RELEASE |



wegweisend innovativ

WE RESERVE ALL COPYRIGHT AND OTHER RIGHTS IN THIS DOCUMENT
SEIFERT SYSTEMS LTD.

| | | | |
|-----------------------------|-------|------|---|
| Art.no.: 8703/06 XXX XX | | | |
| Material: - | | | |
| Complete Assy OC-8703/06 | | | |
| SHEET | SCALE | SIZE | FIRST ANGLE PROJECTION |
| 2 of 2 | 0.350 | A2 |  |
| 46058 | | | |