

UNLESS OTHERWISE SPECIFIED, DIMENSIONS ARE IN MM. DIMENSIONS W/O TOLERANCES ISO2768-mK AS FOLLOWS. SURFACES ISO1302. TOLERANCES ARE NOT CUMULATIVE.

LINEAR DIMENSIONS							
0.5 to 3	>3 to 6	>6 to 30	>30 to 120	>120 to 400	>400 to 1000	>1000 to 2000	>2000 to 4000
±0.1	±0.1	±0.2	±0.3	±0.5	±0.8	±1.2	±2
ANGULAR DIMENSIONS					BEND DIRECTION		
to 10	>10 to 50	>50 to 120	>120 to 400	>400	BEND OUT BEND IN		
±1°	±0°30'	±0°20'	±0°10'	±0°5'			

CONTROLLER IS PROGRAMMED WITH THE FOLLOWING TEMPERATURE SETTINGS.

- 30° C - UNIT STOPS COOLING
- 35° C - UNIT STARTS COOLING
- 05° C - LOW TEMPERATURE ALARM DISPLAYED
- 06° C - LOW TEMPERATURE ALARM OFF
- 45° C - HIGH TEMPERATURE ALARM DISPLAYED
- 44° C - HIGH TEMPERATURE AL ARM OFF

TEMPERATURE SETTINGS CAN ONLY BE MODIFIED BY LOCAL DISTRIBUTOR.

ELECTRICAL CHARACTERISTICS:
VOLTAGE: 115-230 V AC ~ 50/60Hz
MAX CURRENT: xx A @ 120 V
xx A @ 230 V
FUSE RATING: xx A (T) @ 120 V
xx A (T) @ 230 v

WEIGHT: xx kg

PROTECTION RATING: IP 66

- NOTES:
- THIS IS A PRO/ENGINEER PARAMETRIC DRAWING. ANY CHANGES MUST BE WITHIN PRO/INTRALINK.
 - REMOVE ALL BURRS AND SHARP EDGES.

REV	BY	DATE	DESCRIPTION

Art.no.:	6405305
Material:	-
Thermoelectric Unit 400W / 115...230VAC - Flush Mounted TG-6405	

Designed:	A.Camilleri	14.10.2016	FIRST ANGLE PROJECTION	
Drawn:	D.Cini	19.04.2017	SHEET	
Checked:	-	Approved:	-	1 of 5
44360				ISSUE
				*** ***
				SCALE
				0.300
				SIZE
				A2

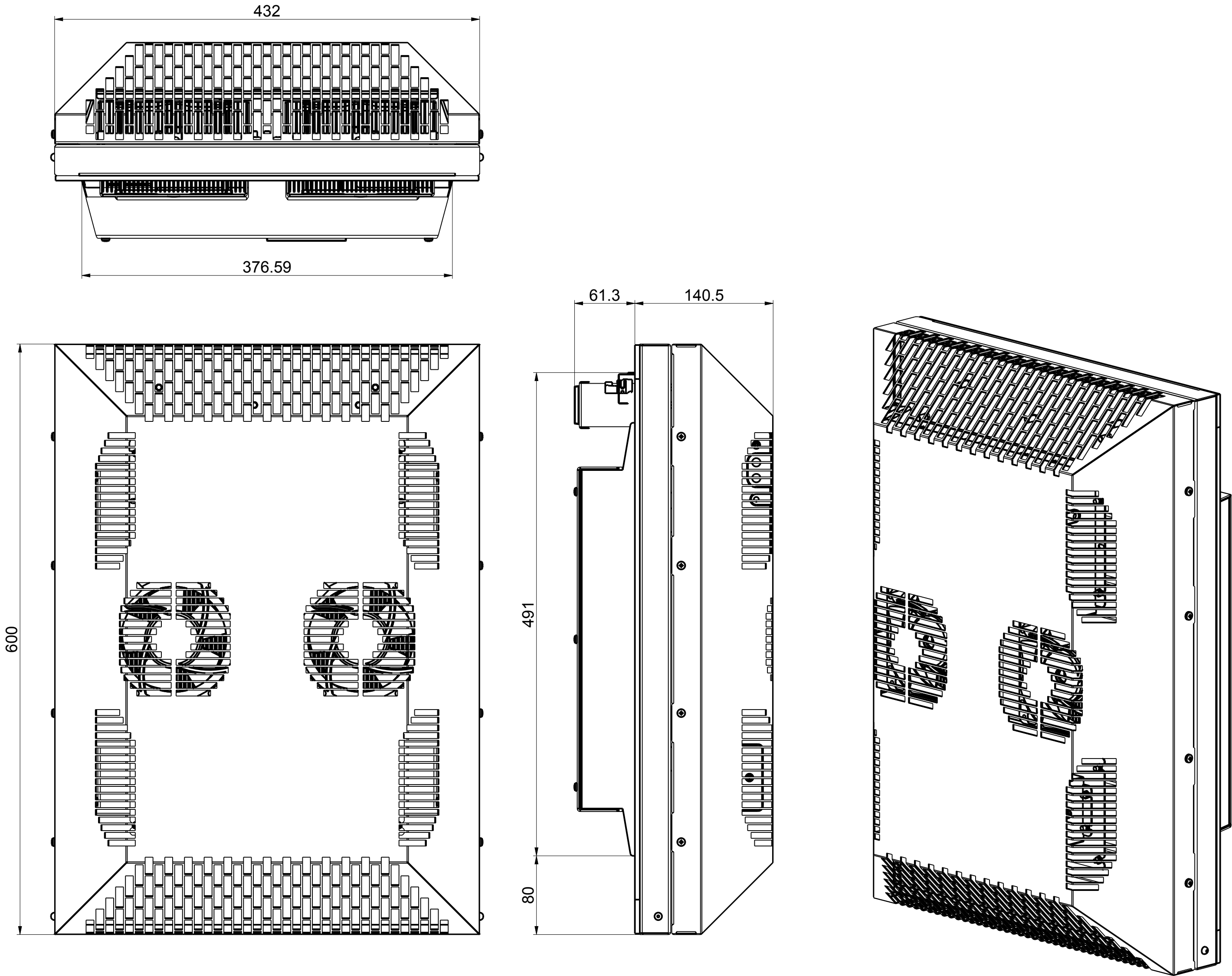
- ASSEMBLY PROCEDURE (TO BE CARRIED OUT BY A QUALIFIED TECHNICIAN):
- 1) MAKE A RECTANGULAR CUTOUT IN THE ENCLOSURE WITH THE DIMS SHOWN IN THE "MOUNTING TEMPLATE".
 - 2) DRILL x10 HOLES IN THE ENCLOSURE WITH THE DIMS SHOWN IN "MOUNTING TEMPLATE".
 - 3) ASSEMBLE THE CONDENSATE DRAIN FITTING PROVIDED, TO THE UNIT.
 - 4) MOUNT THE UNIT TO THE ENCLOSURE USING THE (x10) M6 SCREWS/WASHERS PROVIDED.
 - 5) MAKE SURE THE POWER SUPPLY FEEDING THE POWER CABLE (NOT PROVIDED) IS SWITCHED OFF.
 - 6) WITH REFERENCE TO THE CONNECTOR IDENTIFIER AND WIRING DIAGRAM OF THE UNIT, CONNECT WIRING TO THE 8-POLE FEMALE CONNECTOR AS REQUIRED.
 - 7) ENSURE THAT THE POWER CABLE IS CONNECTED TO A FUSED POWER SUPPLY OF THE CORRECT RATING.
 - 8) SWITCH ON THE POWER SUPPLY AND THE INTERNAL FANS (ALWAYS ON) SHOULD START WORKING
- WHILST THE DISPLAY SHOULD INDICATE THE TEMPERATURE INSIDE THE ENCLOSURE.

44360	DRAWING	***.***	***
TG6505-COMplete	ASSEM	0.9	Work In Progress
PRO/E_FILENAME	FILE TYPE	REV	RELEASE

SEIFERT

wegweisend innovativ

WE RESERVE ALL COPYRIGHT AND OTHER RIGHTS IN THIS DOCUMENT SEIFERT SYSTEMS LTD.



CONTROLLER IS PROGRAMMED WITH THE FOLLOWING TEMPERATURE SETTINGS.

30° C - UNIT STOPS COOLING
35° C - UNIT STARTS COOLING
05° C - LOW TEMPERATURE ALARM DISPLAYED
06° C - LOW TEMPERATURE ALARM OFF
45° C - HIGH TEMPERATURE ALARM DISPLAYED
44° C - HIGH TEMPERATURE AL ARM OFF

TEMPERATURE SETTINGS CAN ONLY BE MODIFIED BY LOCAL DISTRIBUTOR.

ELECTRICAL CHARACTERISTICS:
VOLTAGE: 115-230 V AC ~ 50/60Hz
MAX CURRENT: xx A @ 120 V
xx A @ 230 V
FUSE RATING: xx A (T) @ 120 V
xx A (T) @ 230 v

WEIGHT: xx kg

PROTECTION RATING: IP 66

- ASSEMBLY PROCEDURE** (TO BE CARRIED OUT BY A QUALIFIED TECHNICIAN):
- 1) MAKE A RECTANGULAR CUTOUT IN THE ENCLOSURE WITH THE DIMS SHOWN IN THE "MOUNTING TEMPLATE".
 - 2) DRILL x10 HOLES IN THE ENCLOSURE WITH THE DIMS SHOWN IN "MOUNTING TEMPLATE".
 - 3) MOUNT THE UNIT TO THE ENCLOSURE USING THE (x10) M6 SCREWS/WASHERS PROVIDED.
 - 4) MAKE SURE THE POWER SUPPLY FEEDING THE POWER CABLE (NOT PROVIDED) IS SWITCHED OFF.
 - 5) WITH REFERENCE TO THE CONNECTOR IDENTIFIER AND WIRING DIAGRAM OF THE UNIT, CONNECT WIRING TO THE 8-POLE FEMALE CONNECTOR AS REQUIRED.
 - 6) ENSURE THAT THE POWER CABLE IS CONNECTED TO A FUSED POWER SUPPLY OF THE CORRECT RATING.
 - 7) SWITCH ON THE POWER SUPPLY AND THE INTERNAL FANS (ALWAYS ON) SHOULD START WORKING WHILST THE DISPLAY SHOULD INDICATE THE TEMPERATURE INSIDE THE ENCLOSURE.

8-POLE CONNECTOR F/
SUPPLY, ALARMS & DOOR CONTACT

INTERNAL TEMPERATURE &
ALARMS DISPLAY

x6 AMBIENT OUTLETS
(DO NOT OBSTRUCT)

MOUNTING GASKET

x2 AMBIENT INLETS
(DO NOT OBSTRUCT)

x2 INTERNAL INLETS
(DO NOT OBSTRUCT)

Art.no.: 6405305

Material: -

Thermoelectric Unit 400W / 115...230VAC - Flush Mounted
TG-6405

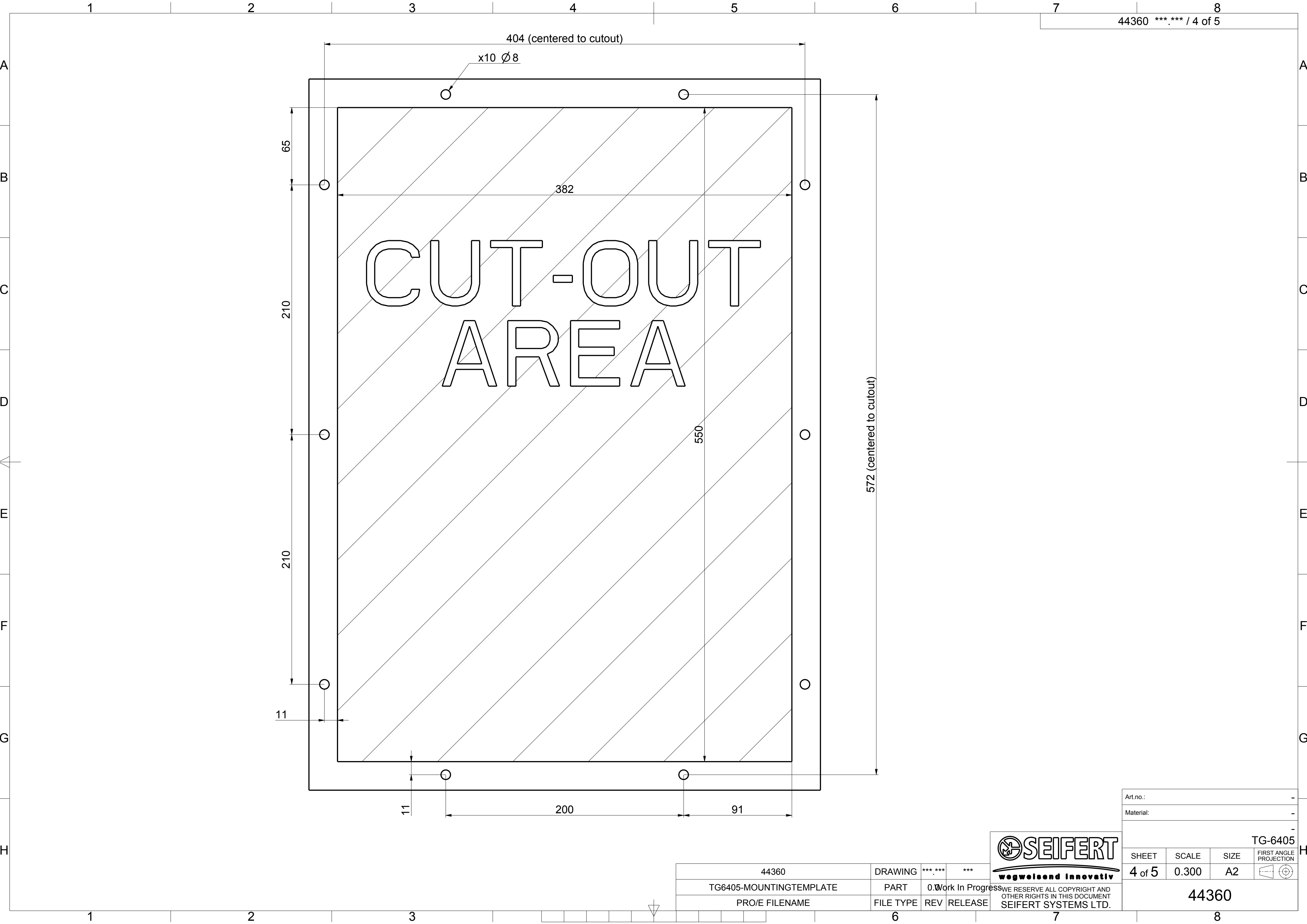


SHEET	SCALE	SIZE	FIRST ANGLE PROJECTION
3 of 5	0.200	A2	

44360


44360	DRAWING	***	***
TG6505-COMplete	ASSEM	0.1	Work In Progress
PRO/E FILENAME	FILE TYPE	REV	RELEASE

WE RESERVE ALL COPYRIGHT AND
OTHER RIGHTS IN THIS DOCUMENT
SEIFERT SYSTEMS LTD.



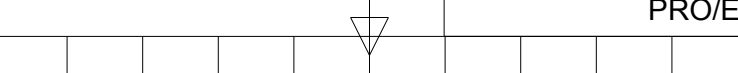
Art.no.: -			
Material: -			
- TG-6405			
SHEET	SCALE	SIZE	FIRST ANGLE PROJECTION
4 of 5	0.300	A2	
44360			

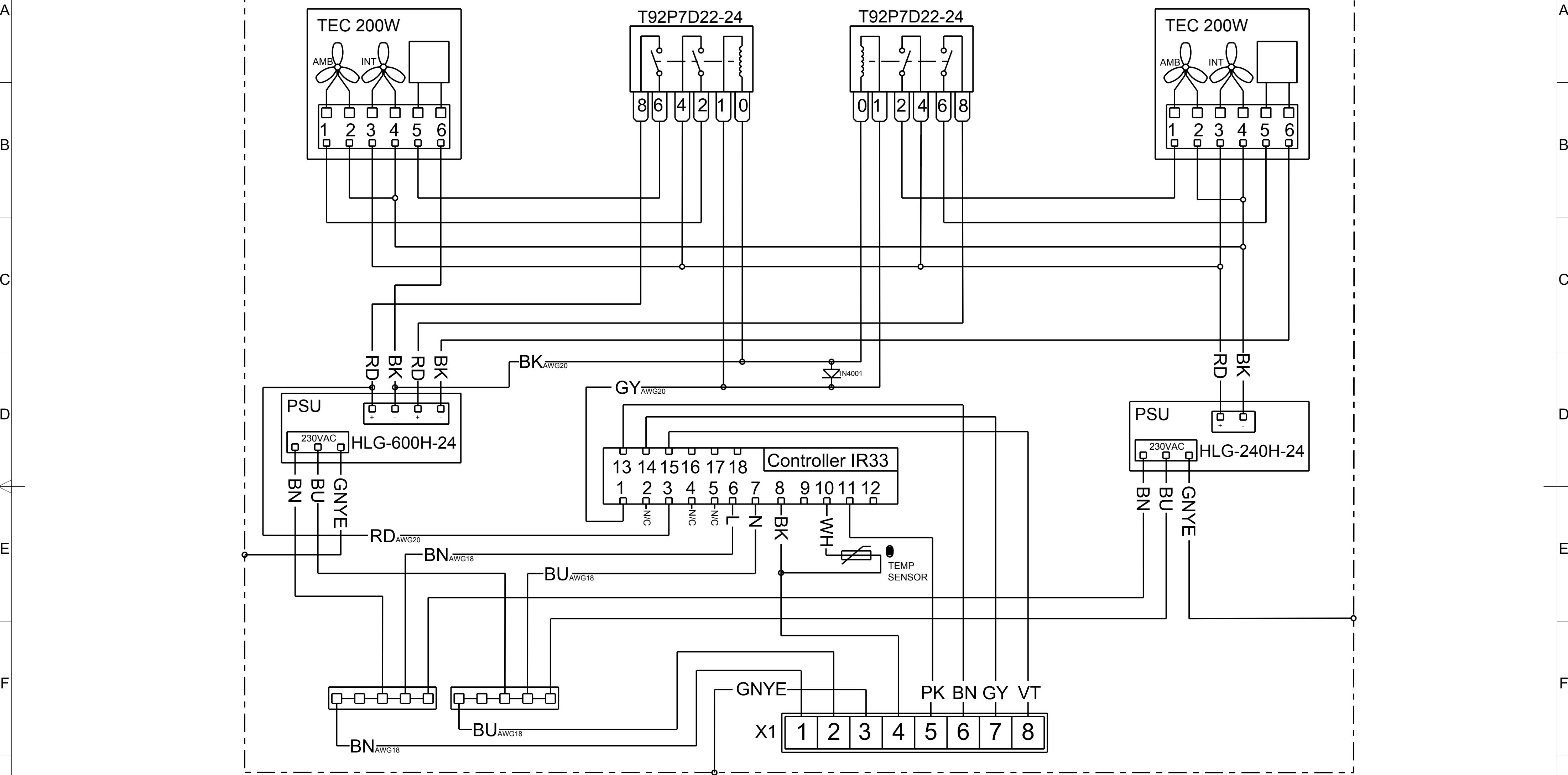
44360	DRAWING	*** **	***
TG6405-MOUNTINGTEMPLATE	PART	0.0	Work In Progress
PRO/E FILENAME	FILE TYPE	REV	RELEASE



SEIFERT
wegweisend innovativ

WE RESERVE ALL COPYRIGHT AND
OTHER RIGHTS IN THIS DOCUMENT
SEIFERT SYSTEMS LTD.





- X1 - 8Pole Connector Positions:
- | | |
|---------------------|--------------------------|
| 1 - Live | 2 - Neutral |
| 3 - PE | 4 - Door Contact P1 (NO) |
| 5 - Door Contact P2 | 6 - Alarm P1 (NC) |
| 7 - Alarm P2 (COM) | 8 - Alarm P3 (NO) |



44360	DRAWING	***.***	***	Art.no.: PR5961030502
-	-	-	-	Material: -
-	FILE TYPE	REV	RELEASE	Circuit Diagram TG-6405
6				SHEET 5 of 5
				SCALE 0.250
				SIZE A2
				FIRST ANGLE PROJECTION
				44360
				8