

WELD GAPS AND GRIND AT ALL
FOUR CORNERS OF ASSEMBLY
(ON BOTH FACES)
USE WELDING JIG TO AVOID DISTORTION

DO NOT FIX POPNUTS
IN MANUFACTURING
SECTION

UNLESS OTHERWISE SPECIFIED, DIMENSIONS ARE IN MM. DIMENSIONS W/O TOLERANCES ISO2768-mK AS FOLLOWS. SURFACES ISO1302. TOLERANCES ARE NOT CUMULATIVE.							
LINEAR DIMENSIONS							
0.5 to 3	>3 to 6	>6 to 30	>30 to 120	>120 to 400	>400 to 1000	>1000 to 2000	>2000 to 4000
±0.1	±0.1	±0.2	±0.3	±0.5	±0.8	±1.2	±2
ANGULAR DIMENSIONS					BEND DIRECTION		
to 10	>10 to 50	>50 to 120	>120 to 400	>400		↑ BEND OUT	
±1°	±0°30'	±0°20'	±0°10'	±0°5'		↓ BEND IN	

NOTES:

1. THIS IS A PRO/ENGINEER PARAMETRIC DRAWING.
ANY CHANGES MUST BE WITHIN PRO/INTRALINK.

2. REMOVE ALL BURRS AND SHARP EDGES.

Item	Description	Art.no.	Qty.
1	Duct Bottom Side	M5930044778	1
2	Duct Top-Side	M5930044776	1
3	Duct Vertical Side	M5930044777	2

0.2	BG	26.02.20	Added assembly view
REV	BY	DATE	DESCRIPTION

Art.no.:	M5930044779		
Material:	-		
4PC Duct MNF Assy TG-6205			
Designed:	D.Cini	16.10.17	FIRST ANGLE PROJECTION
Drawn:	D.Cini	16.10.17	SHEET
Checked:	G.Zammit	Approved:	G.Zammit
44779			1 of 2
			SCALE
			0.600
			ISSUE
			0.2
			SIZE
			A2

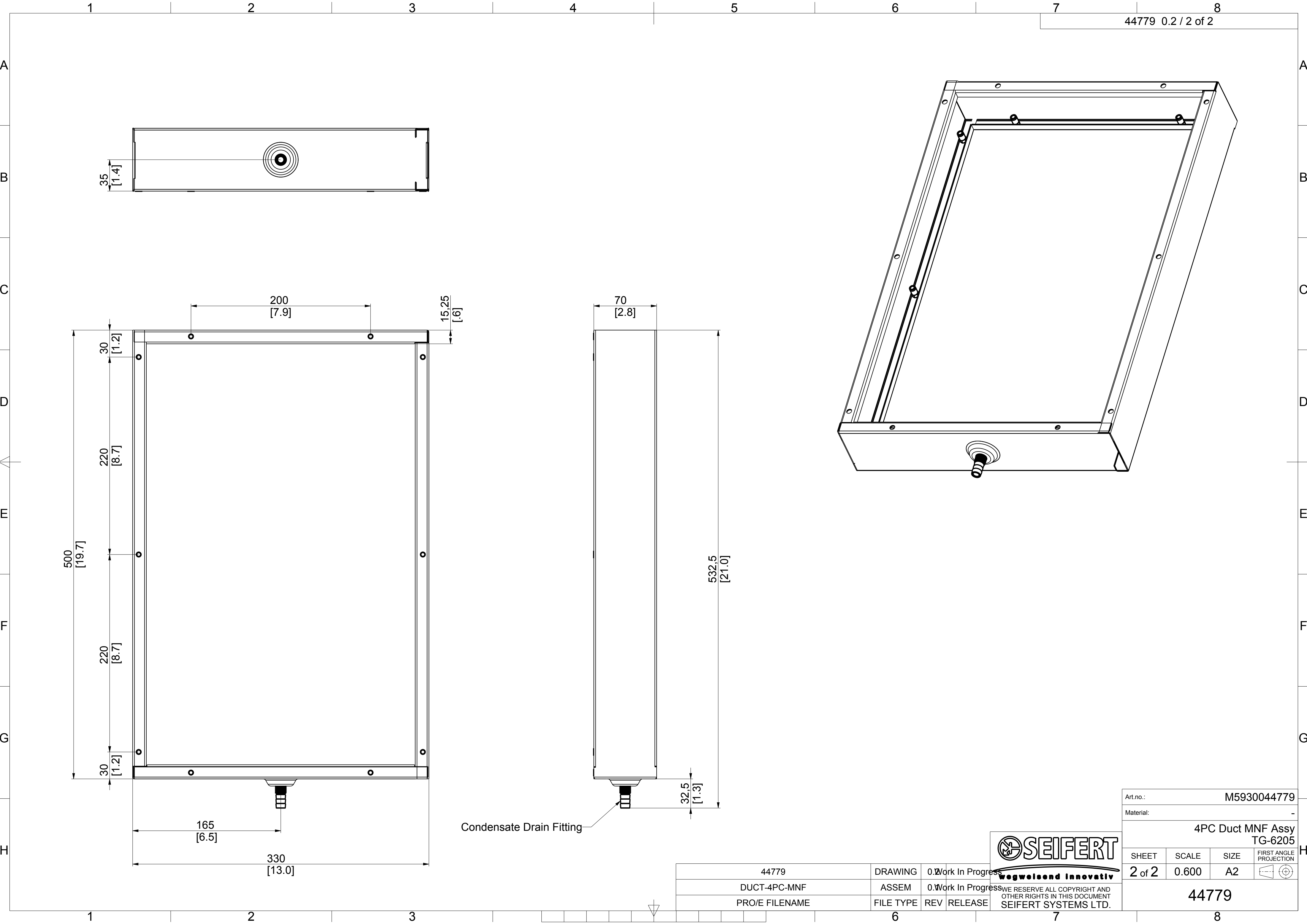
44779	DRAWING	0.2	Work In Progress
DUCT-4PC-MNF	ASSEM	0.1	Work In Progress
PRO/E_FILENAME	FILE TYPE	REV	RELEASE



SEIFERT

wegweisend innovativ

WE RESERVE ALL COPYRIGHT AND
OTHER RIGHTS IN THIS DOCUMENT
SEIFERT SYSTEMS LTD.



Art.no.: M5930044779			
Material: -			
4PC Duct MNF Assy TG-6205			
SHEET	SCALE	SIZE	FIRST ANGLE PROJECTION
2 of 2	0.600	A2	
44779			

44779	DRAWING	0.2 Work In Progress
DUCT-4PC-MNF	ASSEM	0.2 Work In Progress
PRO/E FILENAME	FILE TYPE	REV RELEASE


SEIFERT
wegweisend innovativ

WE RESERVE ALL COPYRIGHT AND OTHER RIGHTS IN THIS DOCUMENT
SEIFERT SYSTEMS LTD.

6	7	8
---	---	---